

طائرات درون

لتنظيف المباني - إطفاء الحرائق رش المبيدات - نقل - وغيرها

ASEM A R LTD | متعهد الأعمال التجارية

الرياض - طريق أنس ابن مالك - مبنى ناجز - البوابة الغربية - الدور الأول

0533313676 – 0539502222 - 008615521111393

لخدمة قطاع الأعمال :

WWW.ASEMBC.COM

INDUSTRY
SECTOR

B100P+ Solid state battery long endurance drone



Improved remote transportation capability
unlocks longer flight distances



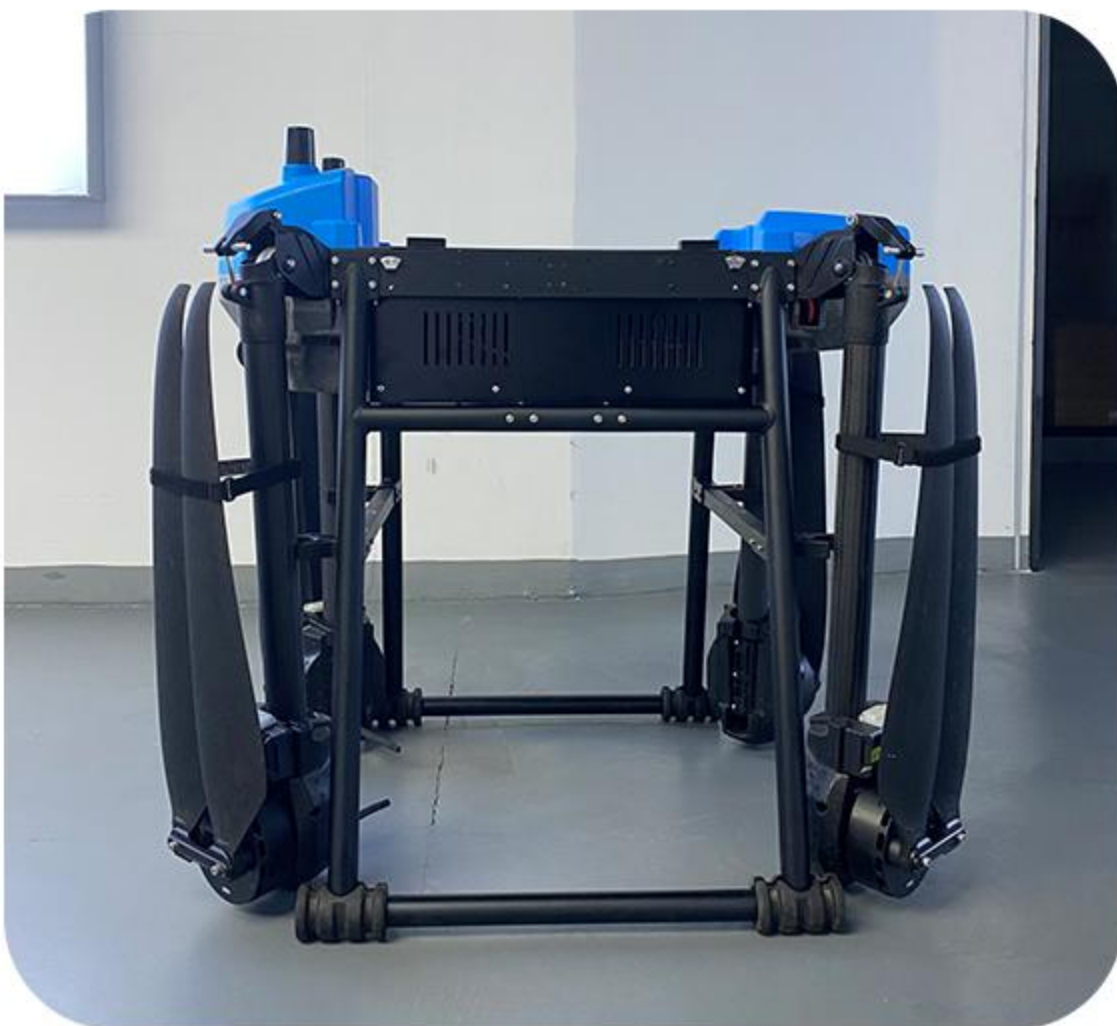
Maximum load
capacity 40KG

solid state
battery

Multiple
mounted devices

Long battery life Drone

Newly upgraded battery compartment, capable of carrying two high-density solid-state batteries with significantly increased battery life



More battery life



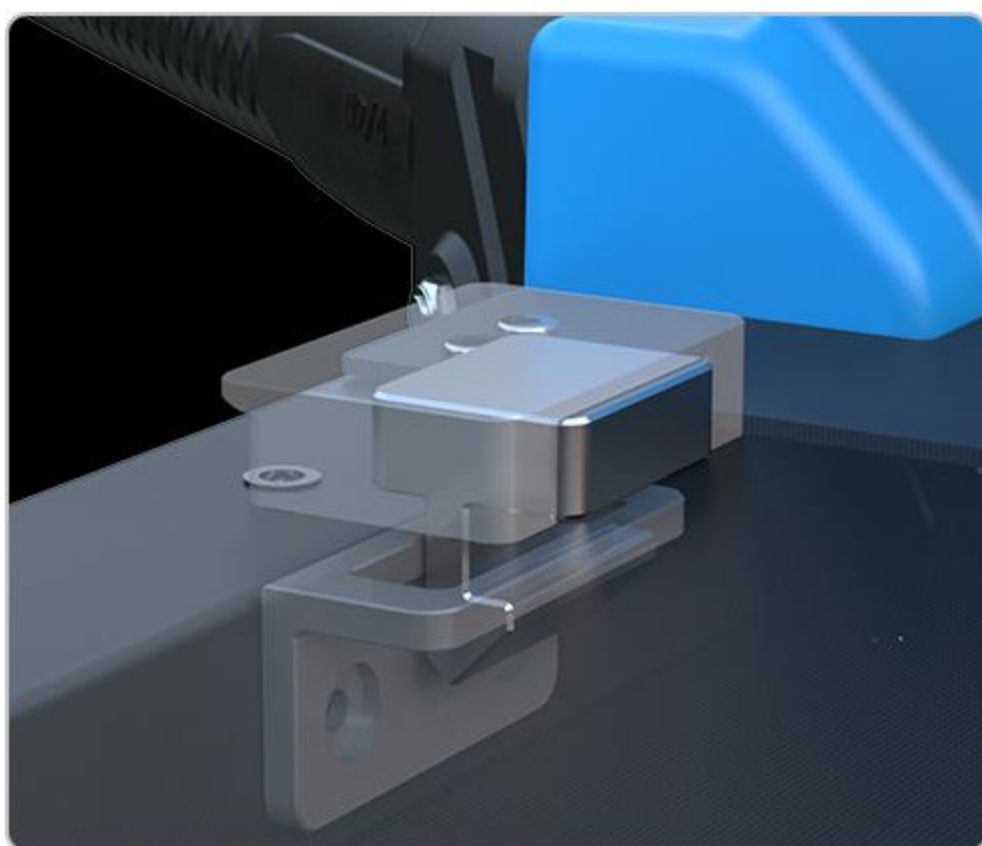
Battery parameters

Size	215*188*215mm
Capacity	70000mAh
Number of battery cell strings	18S
Nominal voltage	66.6V
Battery energy	4662Wh
Energy density	300Wh/kg

Endurance

Load	Initial power consumption	Landing power	Flight time
0kg	76.0v	57.7v	1h09min30s
5kg	76.1v	57.7v	53min46s
10kg	76.0v	57.6v	48min54s
20kg	75.7v	57.6v	41min20s
30kg	76.0v	57.5v	36min48s
40kg	75.9v	57.5v	30min13s

Large capacity battery compartment



Lock buckle fixation



Aviation power plug, quick plug
and unplug



High performance AG6 flight control

Integrated avionics system

Multi terminal data synchronization management

Waterproof, dustproof, and corrosion-resistant

HD image transmission

Multiple cameras compatible and adaptable



Dual light infrared camera



HD camera



Large load flight platform with ample mounting space



Technical Parameter			
maximum payload	40kg	Overall dimensions	1725*1255*1075mm
Empty weight	40kg	Maximum takeoff weight	110KG
Battery weight	15kg	Transport size	1054*834*1120

Application - Firefighting and Extinguishing

The B100P+fire drone can be equipped with a fire spray gun and lifted into the air. It can be directly connected to a fire truck through a 25/40mm water hose, and can quickly and accurately extinguish high-rise fire points



Firefighting drone parameters (fire spray gun)	
Maximum takeoff weight	110kg
Overall dimensions	1725*1755*1100mm
Maximum load capacity	50kg
Maximum flight distance	10 kilometers
Maximum ascent speed	3m/s
Fastest flying speed	13.8m/s
Maximum flight altitude	≤200m
Fire hose type	25/40mm
Flying altitude with water hose	100m/40m
High decibel emergency loudspeaker	Can be equipped with a loudspeaker at the same time

| Firefighting shooting



| Spray shooting



Application - Firefighting Material Disposal

When a fire breaks out in open buildings or mountainous forest farms, B100P+- firefighting drones can throw fireballs, fire bombs, and carry fire extinguishers into the air to quickly and accurately extinguish the fire in the area



Can be carried



Fire extinguisher



Fire extinguisher

| Application shooting



4-way projector mounting, high-definition FPV, adjustable viewing angle, for higher accuracy of delivery



Fire extinguishing tank spraying
fire extinguishing



Fire extinguishing bomb - fixed
height blasting fire extinguishing

Technical Parameter

Firefighting drone (equipment mounting/throwing)

Maximum takeoff weight	110kg	Overall dimensions	1725*1755*1100mm
Maximum load capacity	50kg	Maximum flight distance	10 kilometers
Maximum ascent speed	3m/s	Fastest flying speed	13.8m/s
Maximum flight altitude	≤200m	Full load flight time	15min

Throw

Number of mounts	4/6/9↑	Single mounted weighing	50kg
Throwing mode	Single throw/Full throw	Hooking method	Pull type quick release

Fire extinguisher ball

Weight of fire extinguishing ball	4kg/piece	Single mount quantity	4 of them
Fire extinguishing ball diameter	215mm	Fire extinguishing range	9 cubic meters

Fire extinguishing bomb

External dimensions	outside diameterφ260mm length 620mm	Weight	24.8kg
Types of fire extinguishing agents	BC/ABC dry powder Liquid agent	Fire controll area	≥125 Square meter
Bomb altitude	30-150m	Explosion height	≥5 meters

Fire extinguisher tank

Weight	24kg	Tank pressure	0.8-1.2Mpa
Injection distance	≥10m	Injection time	≤60 seconds
Material	Super fine dry powder	Injection direction	Down/Forward
Effective area	100m ³	Firefighting level	02.5A/13B/E/5F

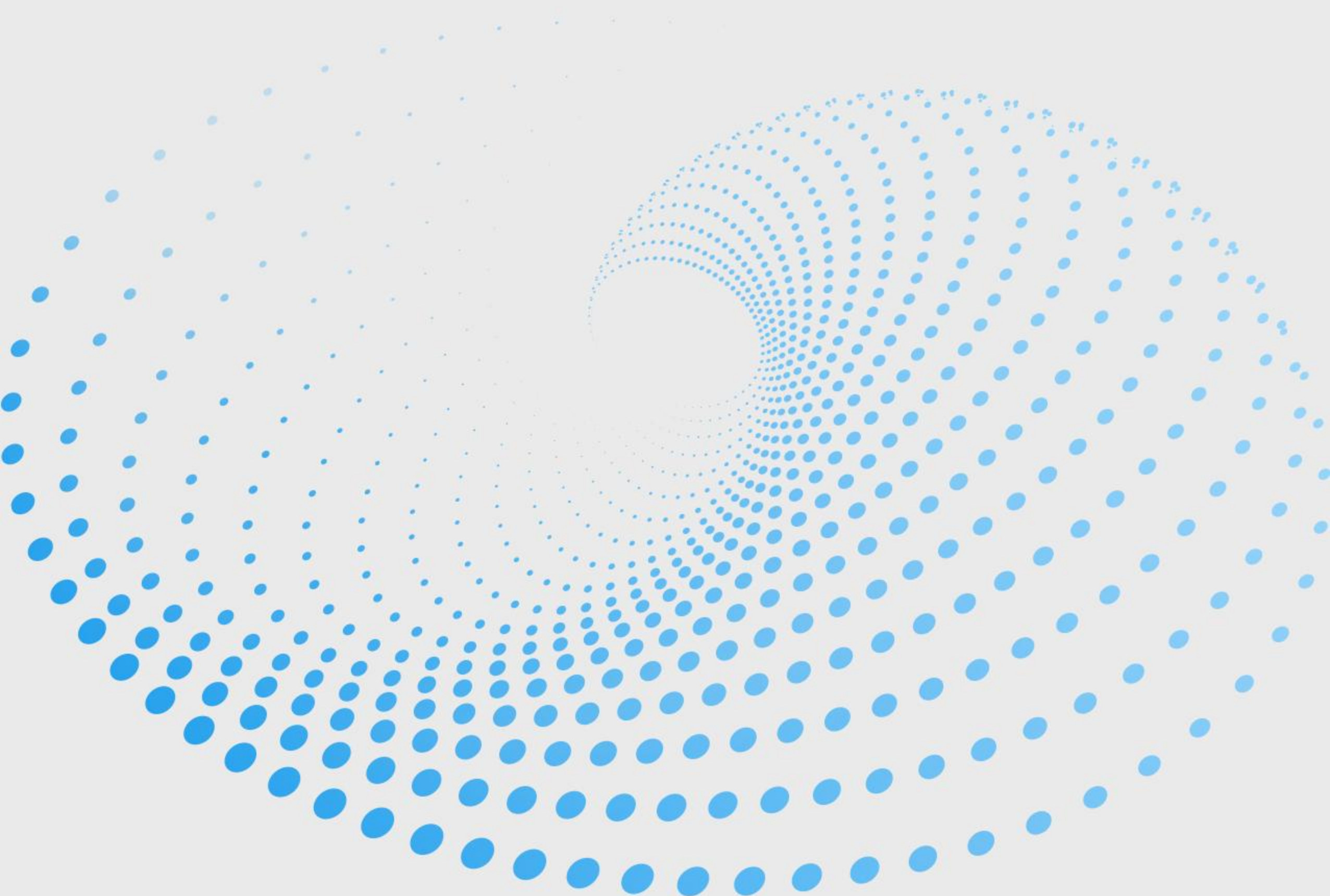
Horizontal fire extinguishing bomb

Max Injection distance	≤50 meters	Breaking ability	Penetrate 16mm tempered glass in 18 m
Speed	≤30m/s	Structural principle	Dry powder injection, no explode
Cover range	10m ³ (Submerge)	Agent	ABC Super fine dry powder

| Material transportation



Product manual



Catalog

Heavy load UAV



B100P



B100P+



B43



B410



A610

Fixed wing



Y45



D10



Y18



X15

FPV Drone



7 inch model



10 inch model

Catalog

Small drone



T1



T3



T2



Accessory



FPV



HD FPV



C12



C13

Remote control



H12



H20



H30

Installable equipment



Loudspeaker



searchlight



three-axis
Searchlight



Capture
net emitter



38MM
emitter



Accessory



Transport



Descent device



Vertical thrower



Shipping box

Cleanse



Photovoltaic panel cleaning



Cleaning gun

Fire fighting



Dry powder fire extinguishing



25L Water-based fire extinguishing



Dry powder fire extinguishing tank



Window breaker - Fire extinguisher



Fire spray gun

product

Heavy load UAV



1 ----- B100 P

2 ----- B100 P+

3 ----- 30AH Battery

4 ----- Shipping box

5 ----- Window breaker -
Fire extinguisher

6 ----- Descent device

7 ----- Solid state battery

8 ----- Cleaning spray gun

9 ----- Fire spray gun

10 ----- Fire hose

11 ----- Dry powder fire
extinguishing

12 ----- 10L Water-based
fire extinguishing

13 ----- 25L Water-based
fire extinguishing

14 ----- Vertical thrower

15 ----- Dry powder fire
extinguishing tank

16 ----- HD FPV

17 ----- C10

18 ----- c12

19 ----- c13

20 ----- C20

21 ----- Loudspeaker

22 ----- three-axis

Searchlight

23 ----- T20

24 ----- T30

Machine parameters

Overall size		1725*1755*1075mm	
Transport size		1054*834*1120mm	
B100P		B100P+	
Empty weight	35kg	Empty weight	38kg
Rated load capacity	50KG	Rated load capacity	40KG
Battery specifications	18S 30AHSmart Battery*2	Battery specifications	18S 70AHsolid state battery*2
Battery weight	13.5kg/piece	Battery weight	15kg/piece
Dual battery life			
Load	Time of flight	Load	Time of flight
0	30min	0	1h09min30s
5kg	28min	5kg	53min46s
10kg	25min	10kg	48min54s
20kg	23min	20kg	41min20s
30kg	21min	30kg	36min48s
40kg	17min	40kg	30min13s
50kg	14min		

Single battery life

Load	Time of flight
0	16min
30kg	10min
40kg	9min
50kg	7.5min

A610

A6-10 is a 10kg unmanned aerial vehicle that can be equipped with dual light and triple light cameras; Can mount professional equipment such as catapults, loudspeakers, searchlights, etc



1 ----- A610

2 ----- Vertical thrower

3 ----- Loudspeaker

4 ----- three-axis Searchlight

5 ----- C12

Technical Parameter

Product size	
Total weight of the machine (excluding battery)	10 kg
Standard takeoff weight	26.5 kg
Remote control distance	20km(No obstruction, open environment)
Battery capacity	14S2P(24000mah51.8V)
Time of flight	40 min(14S2P@24000 mAhBattery&Load Capacity5.0kg) 52 min(14S2P@24000 mAhBattery&Load Capacity3.0kg) 60 min(14S2P@24000 mAhBattery&Load Capacity1.0kg)
Maximum flight speed	13.5m/s

B43

B43 is a 70min long endurance flight platform; IP65 dustproof and waterproof, foldable and portable, multifunctional application



Technical Parameter

Expand size	710*710*500mm
Folding size	345x435x500mm
Whole machine weight (excluding battery)	3.5Kg
Standard takeoff weight	8.8Kg
Maximum takeoff weight	11Kg
Remote control distance	20Km(No obstruction, open environment)
Battery capacity	6S(33000mah 22.2V)
Battery weight	2.6Kg
Flight time	70min(6S@33000mahBattery&No load) 35min(6S@33000mahBattery&Load Capacity3Kg)
Maximum flight speed	13.8m/s

B410

B410 is a 60 minute long endurance flight platform; Foldable and portable, multifunctional application



1----- B410

2 ----- C20

3----- C13

4 ----- C12

5 ----- C10

Technical Parameter

Expand size	1000*1000*600mm
Folding size	580x500x600mm
Whole machine weight (excluding battery)	10.12Kg
Standard takeoff weight	30.3Kg
Maximum takeoff weight	33.6Kg
Remote control distance	20Km(No obstruction)
Battery capacity	12S(60000mah 44.4V)
Battery weight	8.5 · Kg
Flight time	60min(No load) 30min(Load capacity 10kg)
Maximum flight speed	20m/s



Fire fighting



Flight platform



B100P



B100P+



B43



B410



A610



Fire fighting



Installable accessories



HD FPV



C12



C13



Loudspeaker



Searchlight



three-axis
Searchlight



Vertical thrower

Application shooting



Dry powder fire extinguishing tank



25L Water-based fire extinguishing



Dry powder fire extinguishing



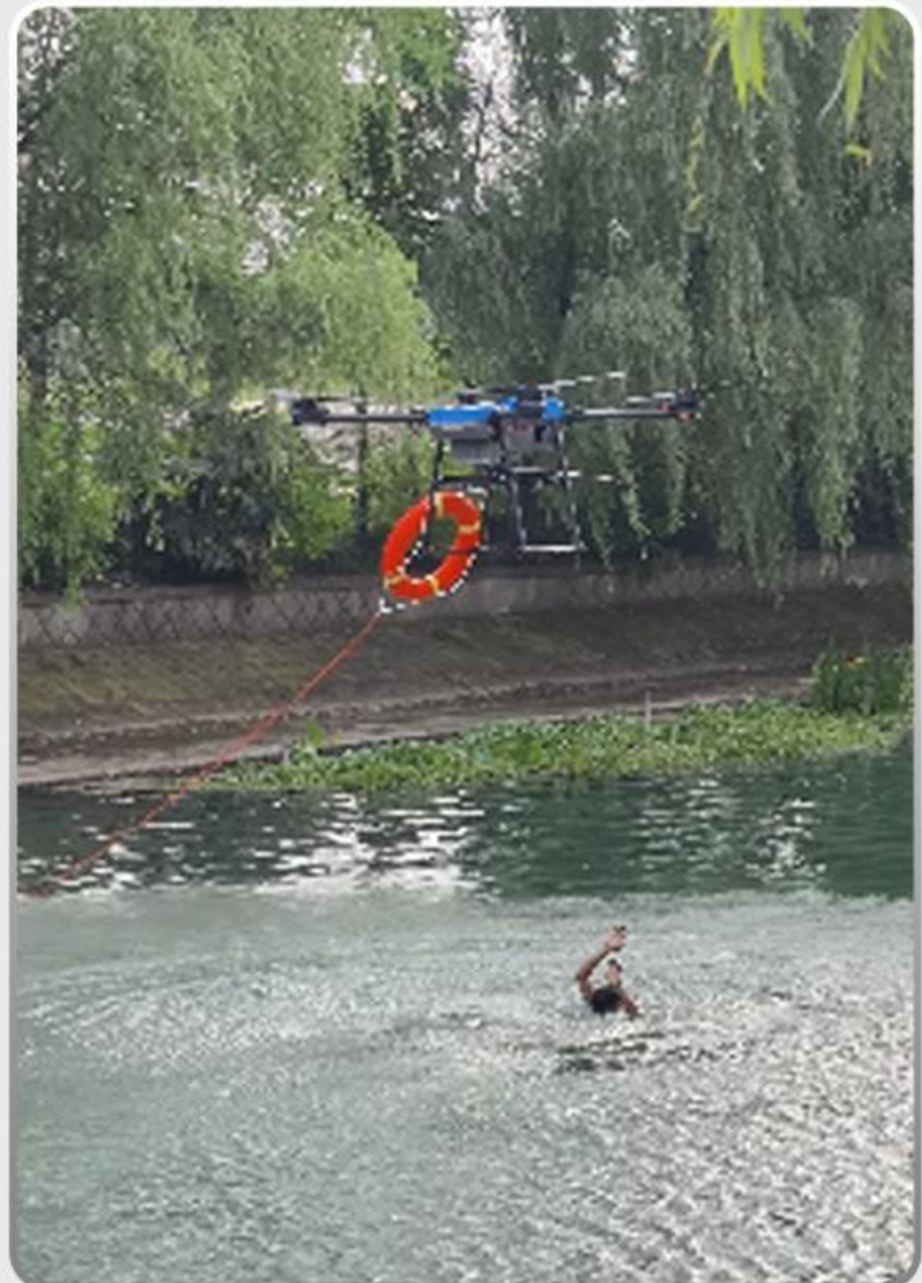
Application shooting



Window breaker - Fire extinguisher



Material transportation



rescue



Fire control



Parameters of installable accessories

Window breaker - Fire extinguisher



Maximum range	≤50米
Initial velocity of launch	≤30m/s
Coverage Area	10m ³ (completely submerged)
Glass breaking ability	Penetrating 16mm thick tempered glass within 18 meters
Structural principle	Dry powder slow-release spray, non explosive
Types of fire extinguishing agents	ABC ultrafine dry powder

Dry powder fire extinguishing tank



weight	24kg
Spray distance	≥10米
Fire extinguishing materials	Ultra fine dry powder
Fire extinguishing range	100m ³
Tank pressure	0.8-1.2Mpa
Spray time	≤60S
Spray direction	Down/Forward
fire rating	02.5A/13B/E/5F

Vertical thrower



Number of mounting points	4/6个
Throwing mode	Single throw/Full throw
Single mounting point load-bearing capacity	50kg

25L Water-based fire extinguishing



External dimensions	Outer diameter of 260mm Length 620mm
Types of fire extinguishing agents	Dry powder and water-based fire extinguishing agents
Bomb altitude	30-150 meters
weight	24.8kg
Fire control area	≥ 125 square meters
Explosion height	≥ 5 meters

Fire spray gun



Interface type	KY40
Water hose	40mm
flow	0.24 tons/minute
Outlet diameter	13mm
Type of effluent	Water, Class A foam
length	1800mm
diameter	48mm
weight	2.6kg
Spray distance	≤20m

Dry powder fire extinguishing



weight	4kg
diameter	215mm
Fire extinguishing range	9m ³



OIL MOVING HELICOPTER



S33、S63



High resolution
optoelectronic cabin



Cargo lifting



Vertical thrower



Transport box

Technical Parameter

	S33	S63
Maximum load capacity	≤120kg	≤250kg
Maximum flight time	4H	6.5H
The farthest flight distance	100KM	100KM
Size	≥3000×900×1300mm	≥3500×1300×1600mm
Maximum load	≥150kg	≥360kg
Maximum takeoff weight	≤300kg	≤660kg
Maximum flight altitude	Maximum flight altitude	≤6000m
Cruise speed	0-25m/s	
Wind resistance level	15M/S	
Flight function	Automatic cruise control and automatic return	
flight	Semi automatic/fully automatic mode	
Structural layout	Tandem helicopter	
Engine function	Support external lubricating oil for two-stroke engines, automatic proportional adjustment system, and automatic start function for electronic cooling fans	

Application shooting





FIXED WING



Fixed wing



Y45



D10



Y18



X15

Installable accessories



吊舱



吊舱



FIXED WING



Technical Parameter

	Y45	D10	Y18
Length and height	2905*930	2263*552	2020*696mm
Wingspan width	5100/3530mm	4005mm	3744*2820
Energy type	Fuel and electric	Electric	Fuel or electric
Maximum takeoff weight	100kg	30kg	35kg
Maximum load capacity	45kg	10kg	5kg

X15 Parameter

Size	1951*1231*517	Maximum takeoff weight	15KG
Cruise speed	30—50M/S	Battery life	≤3—5H
Whole machine weight	10KG	maximum payload	5KG
flight altitude	3000—5000M	Climbing rate	4—6M/S
Maximum height	5000M	cruising range	20—200KM

Y45 real shooting



Capable of carrying 20 kilograms and flying for 7 hours
Tandem body layout, high efficiency, stable structure



Vertical takeoff and landing, unrestricted flight site

D10 real shooting



Suitable for various application scenarios such as long homework time, quick switching of loading equip-



Adopting full body aviation carbon fiber composite material, with high strength and light weight

Y18 real shooting



The engine and propeller are placed behind the fuselage for higher propulsion efficiency, clean main wing airflow, and lower overall drag

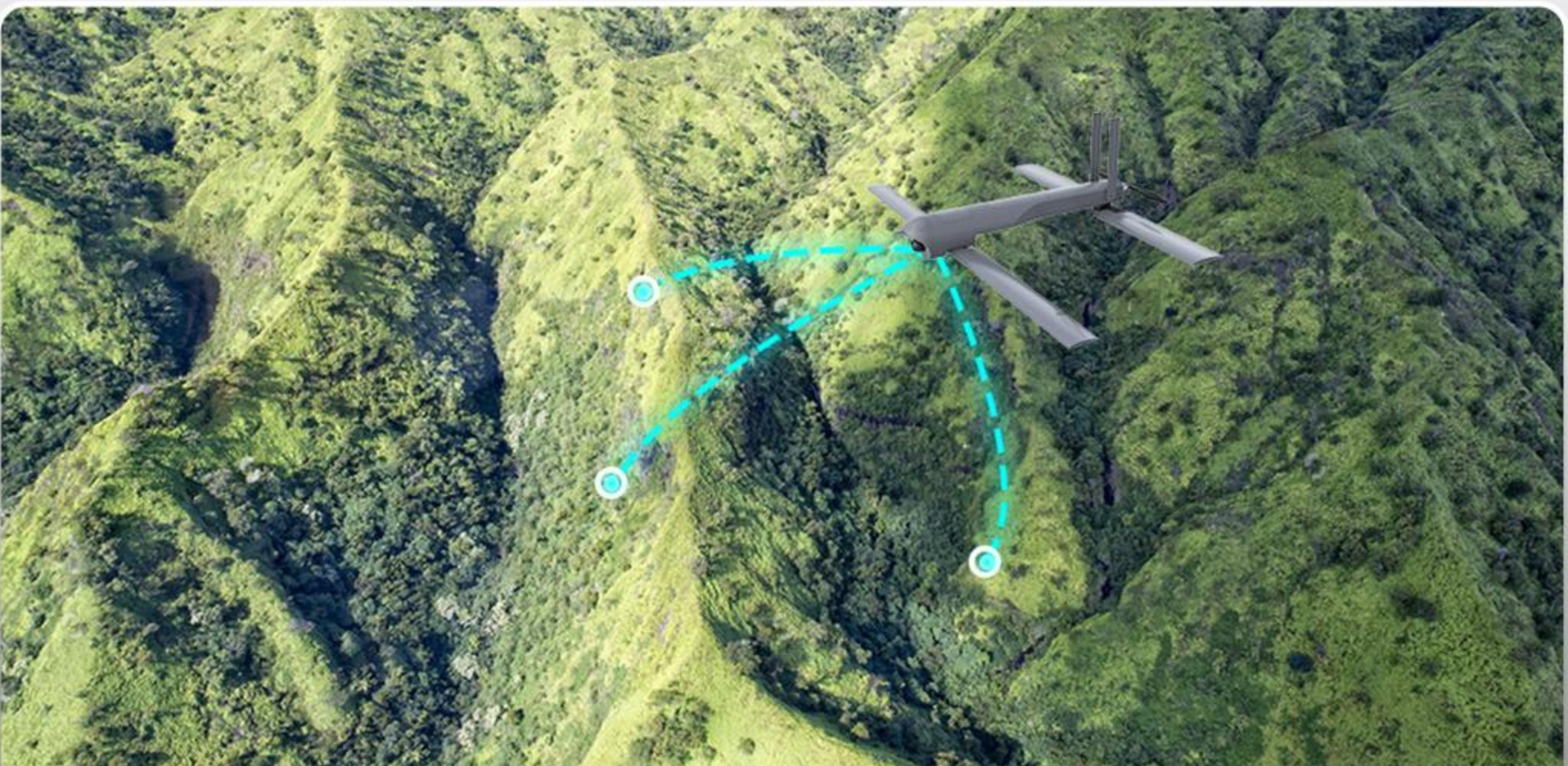


Carry more payload

X15 real shooting



Relay communication drones can be used to provide relay communication services for patrol missiles, enabling flight in complex battlefield environments and ensuring communication stability



X15 loads ammunition to locate and track enemies in the target area, 'investigate' potential high-value targets, and then execute precise attacks



Small drone



parameter



T1



T3



T2

Technical Parameter

	T1	T2	T3
weight	900g	1600g	1209 g
wheelbase	368mm	464mm	397 mm
Folding size	210x123x95mm	257*136*133mm	230*130*108mm
Expand size	433x516x95mm	576*660*149mm	457*558*108mm
Battery life	36min	42min	38min
Maximum range	12km	12km	12 km
Camera type	16x zoom dual beam infrared camera	16x zoom dual beam infrared camera+laser rangefinder	16x zoom dual beam infrared high-definition camera


T1




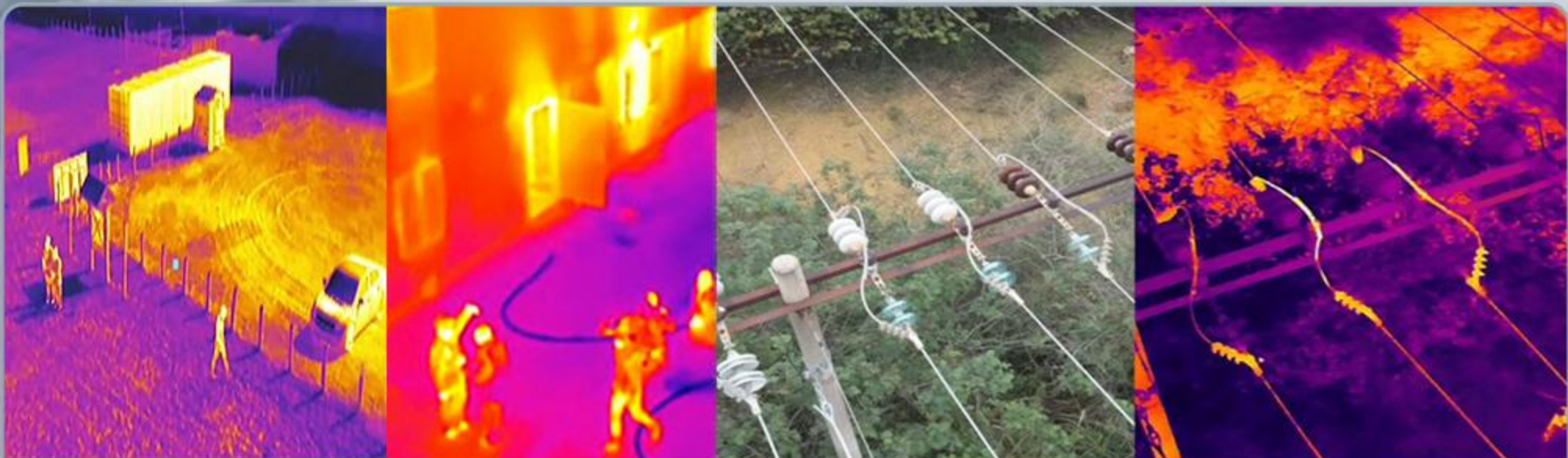
Lightweight and Portable | Quick Folding

 Flight 36 min

 12km image transmission

3-way&binocular vision obsta-
 cle avoidance

 48 million pixels, 16x digital zoom, in-
frared dynamic area temperature mea-
surement

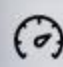


Target investigation, emergency search and rescue,
law enforcement, power inspection


T2

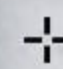


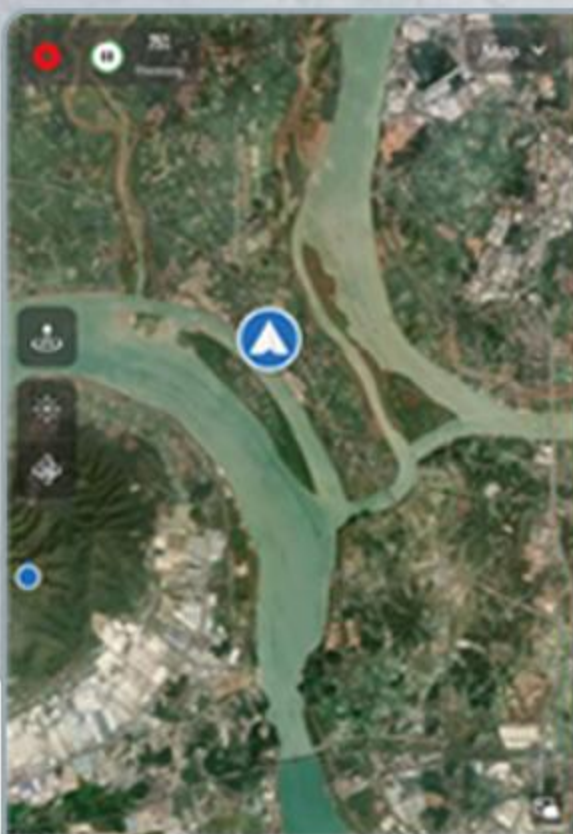
Intelligent evaluation of complex environments, real-time generation of 3D flight paths, and fully autonomous intelligent obstacle avoidance.
Flight without GPS positioning, target tracking with thermal imaging.

 Flight without GPS

 Automatic path generation

 Omnidirectional intelligent obstacle avoidance

 Target tracking



High definition image transmission, multi scenario application

T3



Thermal imaging、Visible light

Six directional binocular、 omnidirectional obstacle avoidance

Four rotor small unmanned aerial vehicle, supporting thermal imaging and visible light, with flexible deployment capability, and 15KM high-definition image transmission.

The body is equipped with 12 visual sensors, integrating 19 sets of sensors such as the main camera, ultrasound, IMU, etc., to construct real-time 3D maps and plan paths

Multi angle and all-round obstacle avoidance, easily traversing complex areas such as jungles, mountains, and cities, providing escort for flight missions

Functional Features



Thermal imaging camera

640 * 512 high-resolution infrared thermal imaging camera, 13mm focal length lens and 16x digital zoom function, easy to observe distant targets

Visible light camera

Support 50 million pixel visible light imaging, discover more details, assist in evidence collection, and achieve accurate judgment

15km HD image transmission

Maximum image transmission distance of 15 kilometers, supporting three frequency bands: 2.4GHz/5.8GHz/900MHz *, adaptive switching of transmission frequency bands to ensure stable and smooth signal transmission, providing protection for shooting operations

Accessories (optional)



Night navigation lights	
size	39*72*34 mm
Scope of work	5000 m
brightness	Max 486cd; Average 290cd



Loudspeaker	
Size	46*80*77 mm
Adjustable angle	0°~45°
Max decibel	120dB



Searchlight	
Size	48.5*72*63 mm
Scope of work	30 m
illumination	11lux @ 30 meters direct



FPV Drone



Flight platform+optional



7-inch model



10-inch model



First Person View



Remote control kit



FPV Drone



Technical Parameter

Name	7 Inches	10 Inches
Flight Control	F405	F405
camera	CADDX Ratel 2	CADDX Ratel 2
electric machinery	2812 1300kv	3115 900KV
size	275x250x36mm	350X330x36mm
Electric tuning	55AESC	60AESC
propeller	HQ 7X3.5X3cm	HQ 10X4.5X3cm
Flight speed	140km/h	140km/h
Rated load	1.5kg	2.5kg
Maximum load	2kg	3.5kg
Empty flight time	30 mins	28 mins
Carrying flight time	12 mins (6s6000mah, 1.5kg)	10 mins (with 6s6000mah, 2.9kg)